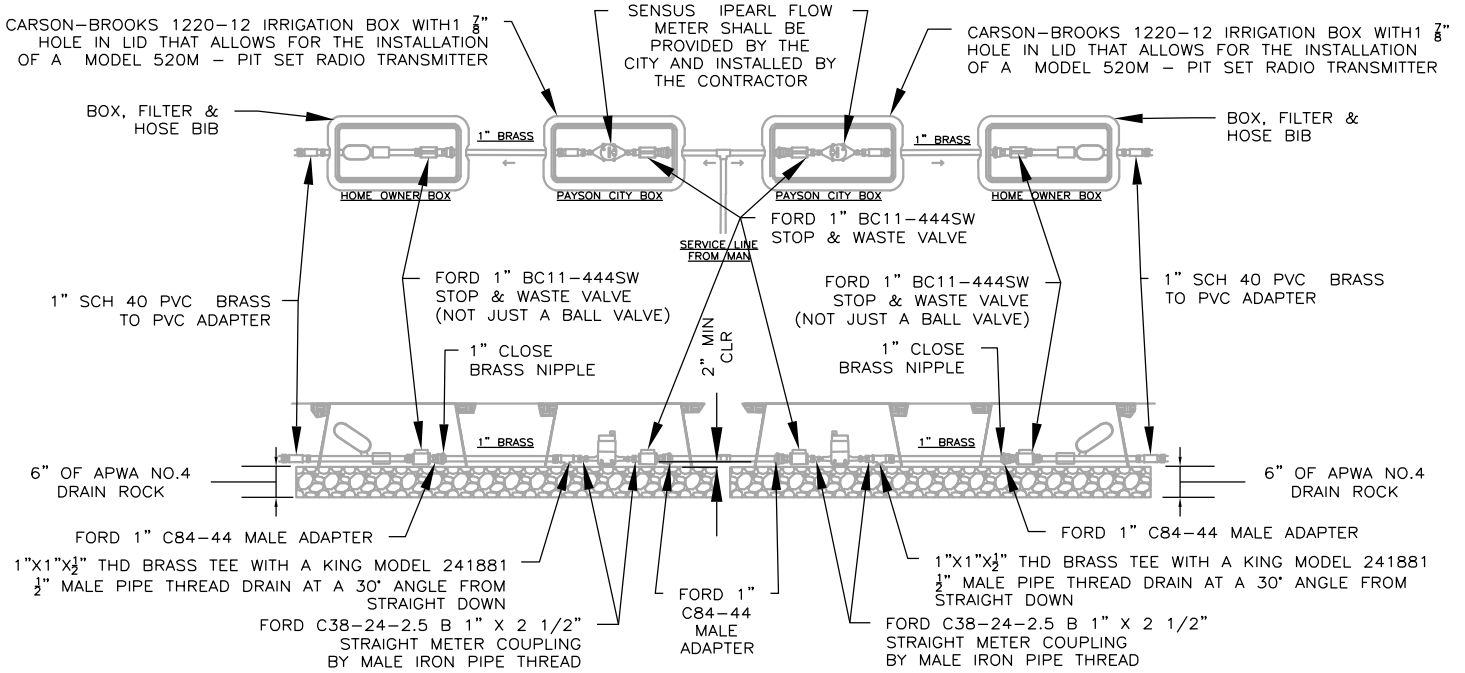
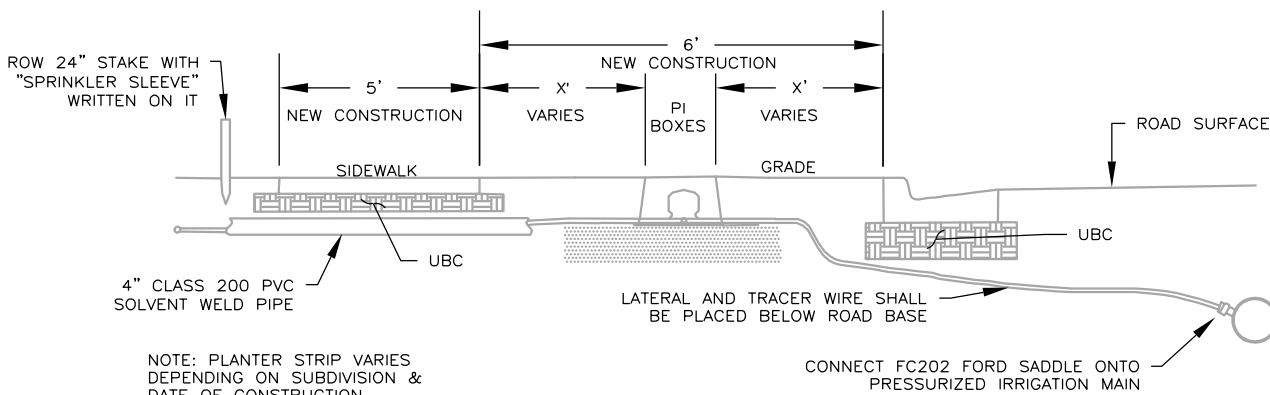


- NOTES:
1. STANDARD SERVICE SIZE SHALL BE 1 1/2" FOR DUAL SERVICES AND 1" FOR SINGLE SERVICES.
 2. STAINLESS STEEL LINER INSERTS WILL BE REQUIRED INSIDE OF TUBING AT COMPRESSION FITTINGS.
 3. ALL FITTINGS SHALL BE COMPATIBLE WITH SERVICE SIZE.
 4. SERVICE LATERAL SHALL SLOPE TOWARDS PRESSURIZED IRRIGATION MAIN.
 5. SPRINKLER SLEEVE SHALL NOT BE IN LINE WITH ANY UTILITY BOXES.
 6. NO OTHER CONNECTIONS OR EQUIPMENT ARE PERMITTED BY CONTRACTOR/HOME OWNER INSIDE PAYSON CITY BOX.
 7. 3' MINIMUM OFFSET FROM DRIVEWAYS
 8. LAYOUT APPLIES FOR 1" TO 4" SERVICE CONNECTIONS. THE SIZE OF THE METER AND FITTINGS WILL CHANGE WITH THE SERVICE SIZE.

<p>PAYSON CITY 439 WEST UTAH AVE. PAYSON, UT 84651 (801) 465-5200</p>	<p>STANDARD DRAWING SINGLE SERVICE PRESSURIZED IRRIGATION SERVICE BOX & LATERAL</p>	<p>SCALE VARIES STANDARD 1 OF 2</p>
---	---	---



IRRIGATION CONNECTION PLAN AND SECTION VIEWS



TRACER WIRE DETAIL

NOTES:

1. STANDARD SERVICE SIZE SHALL BE 1 1/2" FOR DUAL SERVICES AND 1" FOR SINGLE SERVICES.
2. STAINLESS STEEL LINER INSERTS WILL BE REQUIRED INSIDE OF TUBING AT COMPRESSION FITTINGS.
3. ALL FITTINGS SHALL BE COMPATIBLE WITH SERVICE SIZE.
4. SERVICE LATERAL SHALL SLOPE TOWARDS PRESSURIZED IRRIGATION MAIN.
5. SPRINKLER SLEEVE SHALL NOT BE IN LINE WITH ANY UTILITY BOXES.
6. NO OTHER CONNECTIONS OR EQUIPMENT ARE PERMITTED BY CONTRACTOR/HOME OWNER INSIDE PAYSON CITY BOX.
7. 3' MINIMUM OFFSET FROM DRIVEWAYS
8. LAYOUT APPLIES FOR 1" TO 4" SERVICE CONNECTIONS. THE SIZE OF THE METER AND FITTINGS WILL CHANGE WITH THE SERVICE SIZE.

PAYSON CITY

439 WEST UTAH AVE.
PAYSON, UT 84651
(801) 465-5200

STANDARD DRAWING

DUAL SERVICE PRESSURIZED
IRRIGATION SERVICE BOX & LATERAL

SCALE
N.T.S.

STANDARD #
19-02

APPROVAL DATE:

APPROVED BY:

1 OF 1